


SETTING THE PACE



FOR BUSINESS ECONOMICS



National Association for Business Economics


NABE
National Association for Business Economics
National Association for
Business Economics
1233 20th St. NW, Suite 505
Washington, DC 20036
202-463-6223
202-463-6239 (fax)
nabe@nabe.com
www.nabe.com

OUR DYNAMIC MEMBERSHIP

With thousands of members representing some 1,500 businesses and organizations in the private and public sectors, our membership includes:

- Business leaders
- Corporate economists
- Statisticians
- Financial economists
- Consultants
- Product researchers
- Educators
- Government officials
- Load forecasters
- Corporate strategists
- Sector analysts
- International specialists
- Pricing and cost analysts
- Students



PAYMENT INFORMATION

Total Enclosed \$ _____ (outside the U.S. one-year add \$10)
 (outside the U.S. two-year add \$20)
Charge to my: Visa MasterCard American Express Discover
 Check enclosed, payable to NABE in US \$

Name of Cardholder _____

Card Number _____ Expiration Date _____

Credit Card Billing Address _____

City _____ State/Country _____ ZIP/Postal Code _____

- Contributions or gifts to NABE are not tax deductible as charitable contributions. However, dues payments may be tax deductible as ordinary and necessary business expenses.
- NABE membership dues include a \$95 subscription to *Business Economics*.
- Membership dues are not refundable.
- Federal tax identification number: 13-6133105.



Name _____
Job Title _____
Company _____

Address _____

City _____ State/Country _____ Zip/Postal Code _____

Phone _____

Fax _____

Email _____

JOIN NABE TODAY!

SETTING THE PACE IN BUSINESS ECONOMICS

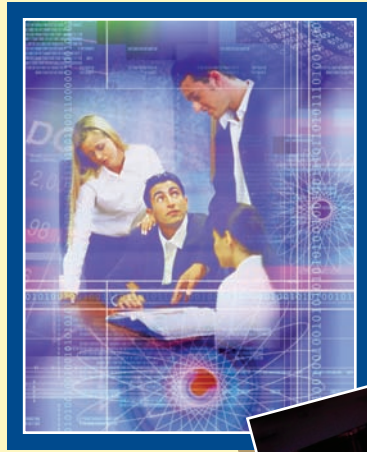
Some professional associations are content to merely monitor industry statistics and follow trends in serving their memberships. At NABE, the National Association for Business Economics, we believe our members deserve much more.

Through our custom-built series of educational seminars and our cutting edge publications, NABE sets the pace in the field of business economics. Since our founding in 1959, we have served as a national clearinghouse for economic information and we have attracted the attention of the most influential and prestigious economic leaders in the world.

Our leadership represents a dynamic, diverse membership that is committed to excellence in understanding, practicing and communicating economics. We're setting the pace in featuring economic issues that matter to you, your business and your government, and you can't afford to be left behind.

Now it's time for you to take advantage of a NABE membership. But what, specifically, is in it for you?

- Participate in frequent teleconferences on the critical economic issues of the day.
- Build resources through NABE's Consultant's Registry.



- NABE conducts industry-specific roundtables where colleagues from a particular industry can share information and advice and discuss business trends.
- Access the latest thinking in economics through your complimentary subscription to NABE's prestigious quarterly journal, *Business Economics*, and the bi-monthly online newsletter, *NABE News*. And NABE's biweekly *IdeaLink* will keep you posted on fast-breaking issues and events.
- From our acclaimed website, www.nabe.com, you can locate member-only resources such as our widely followed U.S. economic forecast and industry forecasts, job postings, in-depth articles on economic issues from NABE's flagship publication, and a nationwide calendar of events.
- Check your forecast against the results of the quarterly *NABE Outlook* survey and *Industry Conditions* survey.



- Through our 40 chapters across the country, you'll have access to local and regional forums where professionals like you can exchange ideas and information.
- Explore new occupations with the NABE's Employment Opportunities or pump up your job search by posting your resume on NABE's Positions Wanted section — both on our website.
- Compare your salary with others' with NABE's biennial Salary Survey.
- Network with fellow members and industry experts at NABE's fall annual meeting and spring policy conference.



NABE — WHERE IDEAS MEET THE MARKETPLACE

Use the convenient Membership Application attached to join us today. Or, for further details, visit our website at www.nabe.com. We're expecting you!

INTRODUCTORY PRICE FOR CHAPTER MEMBER:

\$110 Introductory Member** **Chapter _____

ONE-YEAR MEMBERSHIP FEES:

- \$150 standard membership
- \$100 retiree membership
- \$ 50 student membership* (only full-time students who are unemployed or employed part-time)*

*Year of graduation _____ *School _____ Please attach a copy of student ID

TWO-YEAR MEMBERSHIP FEES — SAVE 10%:

- \$270 standard membership
- \$180 retiree membership

Select your complimentary Roundtable Here:

Roundtable	ID#	Roundtable	ID#
Corporate Planning	21	Regional Utility	24
Finance International	22	Health Economics	25
	23	Manufacturing Technology	26
			29

For Roundtable information visit <http://www.nabe.com/rt>
Additional Roundtable at \$25 each per year: ID# _____

GROUP MEMBERSHIP FEES:

Add additional members from your organization at \$110 each
Name(s) (add another page, if necessary) _____ Roundtable Choice _____

INSTITUTIONAL MEMBERSHIP:

For organizations that want to designate multiple representatives to receive all NABE member benefits and want other employees to attend NABE events at discounted rates. Please contact the NABE office at 202-463-6223, and we'll send you details about these and other benefits for Institutional Members.

OPTIONS FOR ALL MEMBERS:

- Deduct \$9/year/member if you do not wish to receive *Business Economics* in print.
- Add \$75/year/member for a teleconference Gold Pass. Receive \$90 worth of teleconferences.

JOIN NABE TODAY!